

WALL  
IN  
LOVE  
AGAIN

The text is arranged in four lines. The first line contains the word 'WALL' in a bold, sans-serif font. The second line contains the word 'IN' in the same font. The third line contains the word 'LOVE' in the same font. The fourth line contains the word 'AGAIN' in the same font. To the right of the words 'IN' and 'LOVE' is a large, stylized question mark icon. The entire text and icon are filled with a vibrant, abstract pattern of colors including teal, magenta, and black, which appears to be a close-up of a textured surface like a wall or fabric.







**WALL**   
**IN**  
**LOVE**  
**AGAIN**



# WALL IN LOVE LIGHT AGAIN ORIGINS VIBES EXPERIENCE

Un nuovo percorso che ha origine dalle vecchie radici, da ciò che è già conosciuto e che trova linfa vitale per rifiorire sotto una nuova veste ed essere apprezzato ancora di più.

E' un percorso emozionale in cui le sensazioni si intensificano e mutano a seconda degli stati d'animo, generando sinestesie finora inedite.

Una nuova dimensione, all'interno della quale si delinea un nuovo percorso tematico e creativo.

Così come un amore rinnova la sua forza ad ogni stagione, anche le creazioni di Inkiostro Bianco ricevono in questo modo una nuova luce.

Reinnamorarsi è dunque possibile e diventa sinonimo di scelta: quella stessa scelta che si era compiuta e che ora si è pronti a riconfermare in una prospettiva ancora diversa.

## WALL IN LOVE AGAIN

*A new path starting from old roots.*

*What is already known finds lifeblood to bloom again in a new look to be even more appreciated than before.*

*It is an emotional path, where sensations intensify and transform themselves according to the mood. Thus, generating an unprecedented synaesthesia.*

*A new dimension, within which a new thematic and creative course is outlined.*

*Just like a love that renovates its strength throughout the seasons, the creations by Inkiostro Bianco receive a new light as well.*

*It is possible to fall in love again and it becomes a choice: the same choice will be now confirmed again from a different perspective.*





## WALL IN LOVE AGAIN

SIGNIFICA  
REGALARE  
UNA PROSPETTIVA  
DIFFERENTE  
PER RACCONTARE  
UNA NUOVA  
STORIA.

Il **COLORE** è il protagonista di questo primo capitolo, che va a rafforzare le creazioni firmate Inkiostro Bianco conferendo loro una nuova sfumatura cromatica.

Il colore nasce dalla luce, la stessa luce che anima le nostre sensazioni, le nostre emozioni e le nostre visioni creative.

Il **COLORE** abita le nostre vite, i nostri occhi, i luoghi della nostra quotidianità. E' un elemento che caratterizza la nostra personalità e influenza profondamente il nostro stato d'animo.

E' in grado di guidare l'osservatore verso orizzonti nuovi e sconosciuti che sono in attesa di essere svelati. Saper leggere il colore consente di entrare dentro ad universi caleidoscopici e inesplorati. Il colore porta con sé un'esplosione di libertà creativa.

In questa capsule collection una selezione di produzioni iconiche di Inkiostro Bianco si tinge di nuove cromie. Sono i colori delle passerelle dell'alta moda e delle tendenze stagionali a invadere di luce la magia di questa nuova storia che vogliamo raccontarvi.

**COLOUR** is the protagonist of this first chapter, that highlights the creations signed by Inkiostro Bianco by giving them a new chromatic nuance.

*Colour comes from light, the same light that animates our sensations, our emotions and our creative visions.*

**COLOUR** resides in our lives, in our eyes, in the places of our everyday life. It is an element, which characterizes our personality and it can deeply influence our state of mind.

*It guides the observer through new and unknown horizons, waiting to be discovered. Knowing the colours enables you to enter kaleidoscopic and unexplored universes. The colour brings an explosion of creative freedom.*

*A selection of iconic Inkiostro Bianco productions acquires new colour shades within this capsule collection. The colours of high fashion catwalks and seasonal trends invade the magic of this new story that we are about to tell you.*

**WALL IN LOVE AGAIN  
MEANS  
CONFERRING  
A NEW POINT OF VIEW  
TO TELL  
A NEW STORY.**



WALL

IN

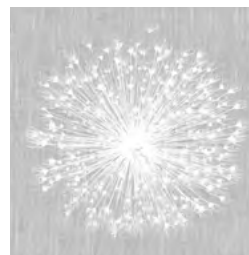
LOVE

AGAIN





# BREATH



INKNNLM1401

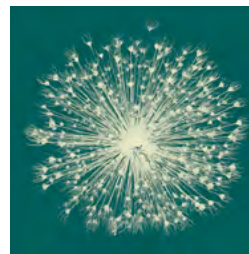


INKNNLM1402

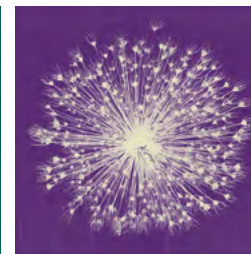


14  
18

Designer: **Inkiostro Bianco**



INKNNLM1403



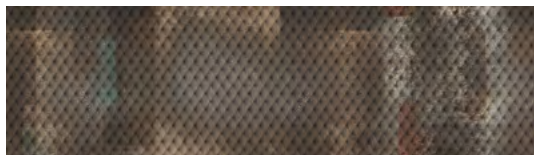
INKNNLM1404



INKNNLM1405



INKNNLM1406



INKDNBM1501



INKDNBM1502



15  
18

# COSTURA

Designer: **Inkiostro Bianco**



INKDNBM1503



INKDNBM1504



INKDNBM1505







HANS HARTUNG  
**The Jean-Michel Basquiat Show**



# INLAY

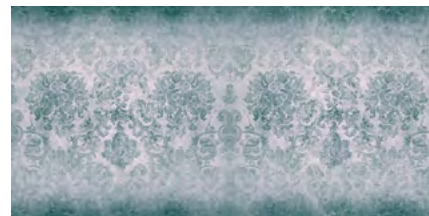


INKKKLL13

Designer: **Inkiostro Bianco**



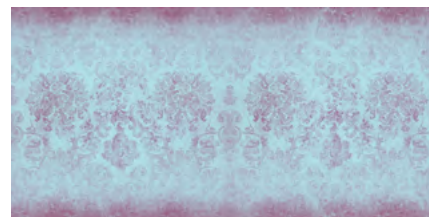
INKKKLL1302



INKKKLL1303



INKKKLL1304



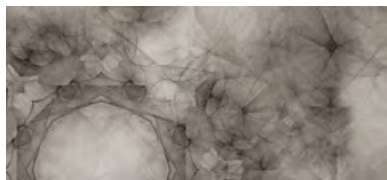
INKKKLL1305



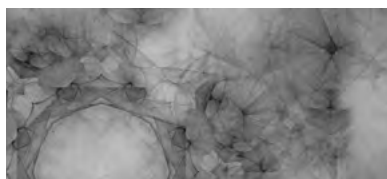
15

18





INKBRCC1401



INKBRCC1402

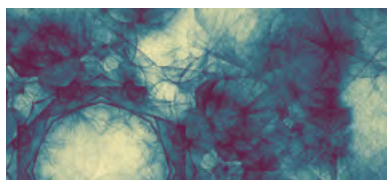
14  
18



INKBRCC1403



INKBRCC1404



INKBRCC1405



INKBRCC1406

# COTTON CLOUD

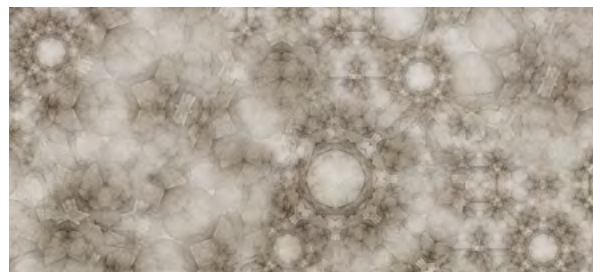
Designer: **Barbara Varini**









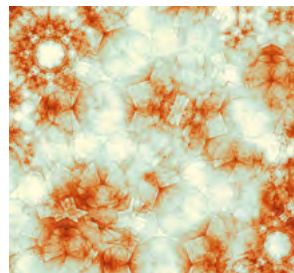


INKAAEE14

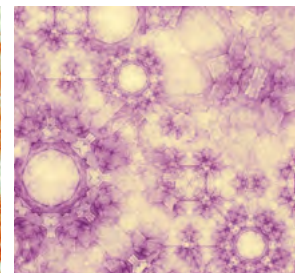


# KALEIDOSCOPE

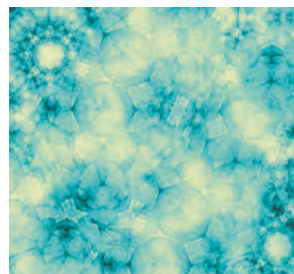
Designer: **Barbara Varini**



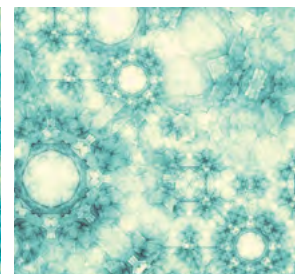
INKAAEE1402



INKAAEE1403



INKAAEE1404



INKAAEE1405





15  
18

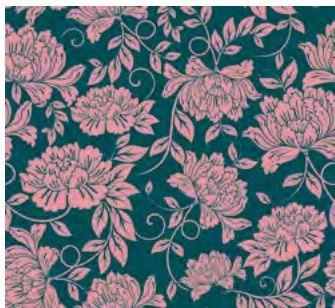


INKDNXU1501



INKDNXU1502

# CHRYSAN



INKDNXU1503



INKDNXU1504

Designer: **Inkiostro Bianco**



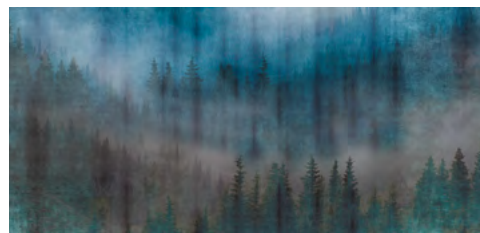
INKDNXU1505



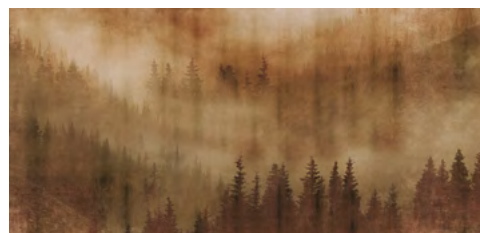
INKDNXU1506







INKUNDC1501

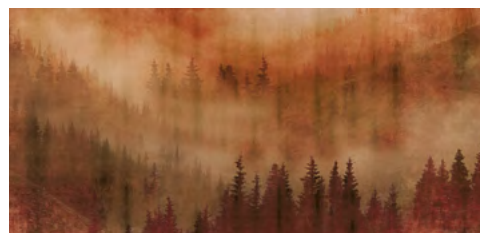


INKUNDC1502

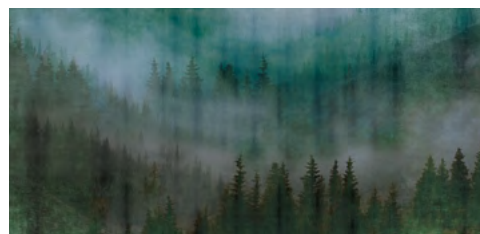


# MIST

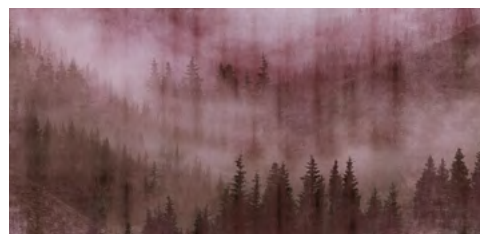
Designer: **Barbara Varini**



INKUNDC1503

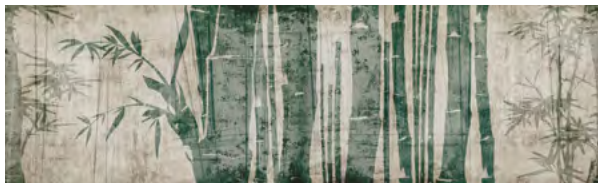


INKUNDC1504

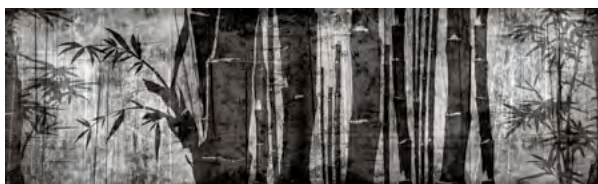


INKUNDC1505





INKMG1301



INKMG1302

13  
18



INKMG1303



INKMG1304



INKMG1305

# MYSTIC GARDEN

Designer: **Inkiostro Bianco**









# NATZUMI

Designer: **Inkiostro Bianco**



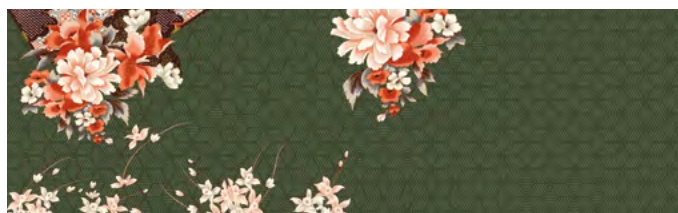
INKNFAR14



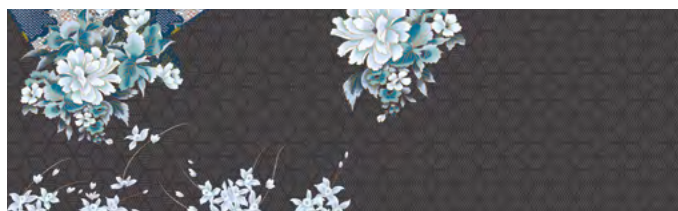
14  
18



INKNFAR1402



INKNFAR1403



INKNFAR1404





INKNF1301



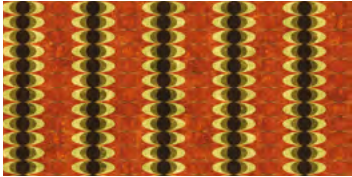
INKNF1302



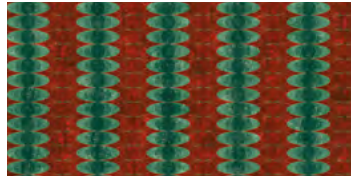
INKNF1303

NINETEEN  
FIFTY  
NINE

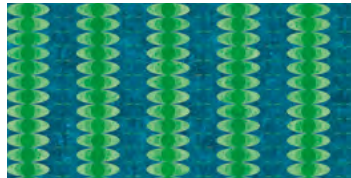
13  
18



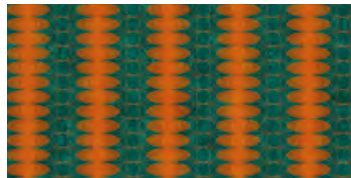
INKNF1304



INKNF1305



INKNF1306



INKNF1307

Designer: **Barbara Varini**









# OLD WEB

Designer: **Inkiostro Bianco**



INKOW1301



INKOW1302



INKOW1303



INKOW1304



INKOW1305



13  
18





INKGTFK1501



INKGTFK1502



INKGTFK1503

# PERSIAN SAND

Designer: **Barbara Varini**

15  
18



INKGTFK1504



INKGTFK1505



INKGTFK1506









# PETITE PROVENCE



INKOO114



14

18

Designer: **Inkiostro Bianco**



INKOO11402



INKOO11403





14  
18



INKTTPP1401



INKTTPP1402

# PLUMA DE PAVO

Designer: **Inkiostro Bianco**



INKTTPP1403



INKTTPP1404



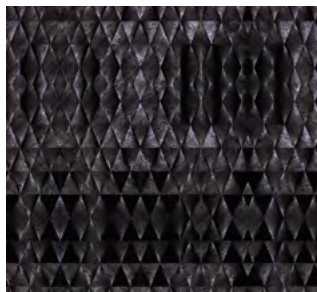
INKTTPP1405



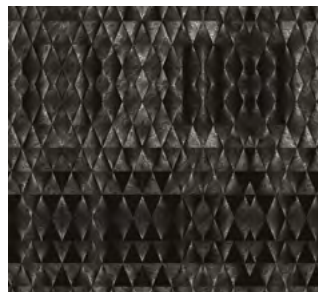


# PYTHON

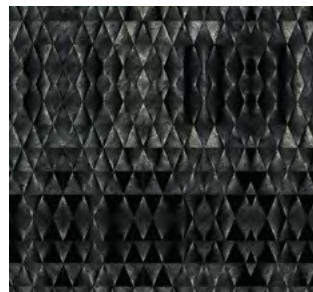
Designer: **Inkiostro Bianco**



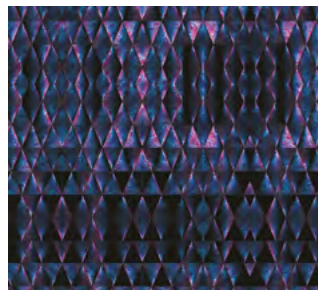
INKGDEM14\_C01



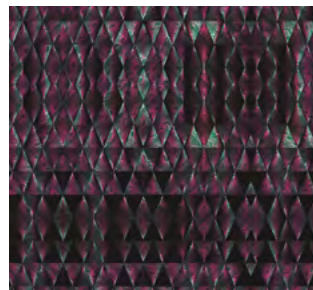
INKGDEM14\_C02



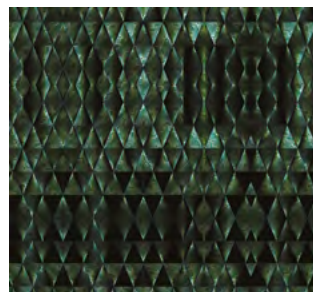
INKGDEM14\_C03



INKGDEM14\_C04



INKGDEM14\_C05



INKGDEM14\_C06



14

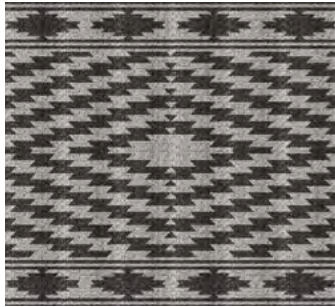
18



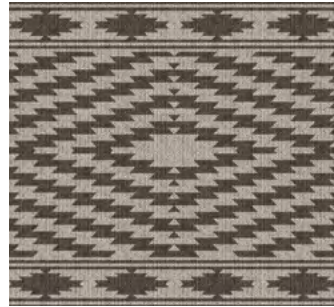


14

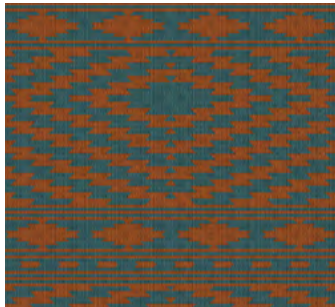
18



INKOOPP1401



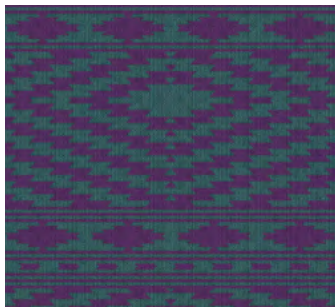
INKOOPP1402



INKOOPP1403



INKOOPP1404



INKOOPP1405

# TEJIDO

Designer: **Inkiostro Bianco**











INKNMIN1501



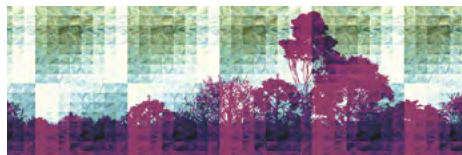
INKNMIN1502



INKNMIN1503

# THULE

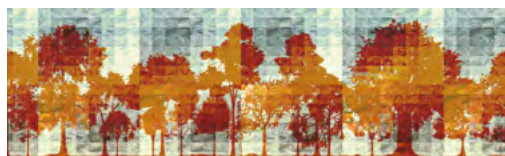
Designer: **Inkiostro Bianco**



INKNMIN1504



INKNMIN1505



INKNMIN1506



15

18





TOILE  
DE JOUY  
03

Designer: **Inkiostro Bianco**



INKFMND14\_C01



INKFMND14\_C03



14  
18



INKFMND14\_C05

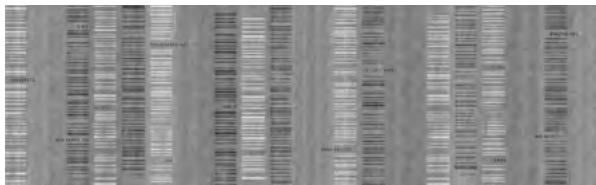


INKFMND14\_C06



INKFMND14\_C07



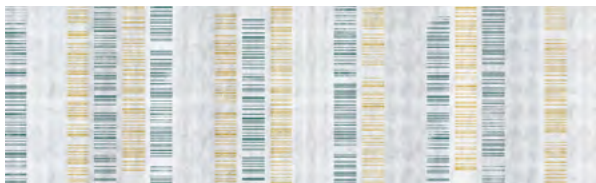


INKWX1301



INKWX1302

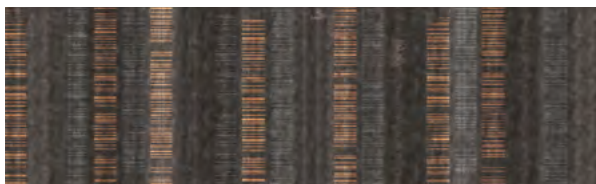
13  
18



INKWX1303



INKWX1304



INKWX1305

# WALL CODEX

Designer: **Barbara Varini**





INDEX

BREATH P. 6	
COSTURA P. 8	
INLAY P. 10	
COTTON CLOUD P. 12	
KALEIDOSCOPE P. 14	
CHRYSAN P. 16	
MIST P. 18	
MYSTIC GARDEN P. 20	
NATZUMI P. 22	
NINETEEN FIFTY NINE P. 24	
OLD WEB P. 26	
PERSIAN SAND P. 28	
PETITE PROVENCE P. 30	
PLUMA DE PAVO P. 32	
PYTHON P. 34	
TEJIDO P. 36	
THULE P. 38	
TOILE DE JOUY 03 P. 40	
WALL CODEX P. 42	

La carta da parati vinilica di Inkiostro Bianco è il rivestimento creativo per pareti e complementi d'arredo.

La reinterpretazione della classica carta da parati è possibile grazie alle avanzate tecnologie digitali, all'attività manuale e alla abilità creativa unitamente alla capacità tecnica di tradurre in superfici innovative le idee di clienti e progettisti.

La carta da parati vinilica è il supporto ideale per le applicazioni in interior, su pareti, soffitti e complementi d'arredo. La nostra carta da parati garantisce la massima risoluzione di stampa anche su grandi dimensioni.

Tutte le carte da parati Inkiostro Bianco rispondono alle normative europee per la salute e la tutela dell'ambiente.

Dalla collaborazione tra Inkiostro Bianco e Mapei nasce il rivoluzionario rivestimento dalla duplice funzione decorativa e protettiva.

**EQ-dekor®** è un'armatura in tessuto bidirezionale in fibra di vetro con caratteristiche di maggiore stabilità, efficienza, leggerezza e flessibilità rispetto a una carta da parati tradizionale. Per la sua elevata resistenza all'usura è ideale per l'applicazione in zone umide o in aree ad alto calpestio, come pavimenti, cucine e bagni.

La fibra di vetro di **Mapei** nasce come componente strutturale per l'edilizia con l'obiettivo di minimizzare il rischio di distacco di componenti dalle pareti in caso di terremoto. Intuizione di Inkiostro Bianco quella di proporre la stampa del materiale con finalità decorative. Nasce così **EQ-dekor®** che, proprio grazie alla sua funzione originaria, presenta caratteristiche di resistenza all'usura superiore.

Un rivestimento in taffetà unico e versatile, caratterizzato da una forte possibilità di customizzazione, sul quale possono essere applicate tutte le grafiche delle collezioni Inkiostro Bianco.

Un tessuto tesato in poliestere Made in Italy con caratteristiche di elevatissima resistenza conferite dall'esclusiva composizione della trama a 110 fili per pollice.

Ideale per allestimenti temporanei in ambito retail, boutique, vetrine, showroom, esposizioni, stand fieristici e hospitality (hotel, ristoranti, bar, discoteche).

I tessuti tesati sono facilmente posabili e intercambiabili, l'installazione non richiede interventi strutturali.

Tra la superficie e il rivestimento murale possono essere inseriti elementi coibentanti o insonorizzazioni per aumentare il comfort e la sicurezza.

## VINILE

*Inkiostro Bianco vinyl wallpaper is the creative decoration for wall surfaces and furniture.*

*The reinterpretation of the classic wallpaper is made possible by combining advanced digital technologies, hand craftsmanship, creative ability and the ability to translate the customers and interior designers' ideas into innovative surfaces.*

*Vinyl wallpaper is the ideal solution for interior applications on wall surfaces, ceilings and furnitures.*

*Our vinyl wallpaper guarantees the highest print resolution even on the largest of surfaces.*

*All of Inkiostro Bianco wallpapers comply with the European Health and Environmental regulations.*

## FIBRA EQ•Dekor®

*Decorated fibre glass for floorings, bathrooms and kitchens. The revolutionary covering with protective and decorative function originates from the cooperation between Inkiostro Bianco and Mapei.*

***EQ-dekor®** is a structure of bidirectional fabric made of fibre glass with much stability, efficiency and flexibility than traditional wallpaper.*

*Thanks to its extraordinary wear resistance, it is suitable for the installation in rooms prone to splashes and spillage as well as heavy underfoot wear and tear, such as floors, kitchens and bathrooms.*

*The fibre glass by **Mapei** is a structural component for the construction industry and its aim is to reduce the risk of detachment in case of earthquake.*

*Inkiostro Bianco had the idea to print a decoration on this material. This is the birth of **EQ-dekor®**, that, thanks to its early function, has a better wear resistance rather than the other fibre glass products on the market.*

## TELA®

*A unique and versatile taffeta covering offering the possibility for the utmost customisation, since it can display all Inkiostro Bianco artworks.*

*A Made in Italy stretched fabric in polyester with the highest resistance thanks to its exclusive weave composition of 110 threads per inch.*

*It is ideal for temporary installations in retail spaces, boutiques, shop displays, showrooms, exhibitions, event stands and hospitality ambiances, such as hotels, restaurants, bars, clubs.*

*Stretched fabrics are easily installed and interchangeable. Furthermore the installation doesn't need any structural intervention. Insulating or soundproof elements can be inserted between the surface and the wallcovering to increase the comfort and safety of the installation.*

## MATERIALS





## CREDITS



### GRAPHIC DESIGN

Manuel Mollicone  
Umberto Stagni

### COPY

Elena Grazioli

### PHOTOS AND INTERIOR DESIGN

Celeste Cima  
Paolo Golumelli  
PhotoDesign Lab  
Thomas Pagani

### THANKS TO

Bonaldo • Gaber  
Mastella Design • Quinti  
Rexa • Riflessi • Softhouse

Printed and bound in Italy - November 2018  
by Sincromia S.r.l.

© 2018 Inkiostro Bianco.  
All rights reserved.





WALL  
IN  
LOVE  
AGAIN

 Inkiostro Bianco®  
CREATIVE THINKING

**HEADQUARTER & LAB INKIOSTRO BIANCO**

via Emilia Romagna, 166/168/170  
Sassuolo 41049 Modena - Italy

**SHOWROOM**

Inkiostro Bianco  
via Marco Polo, 7  
Sassuolo 41049 Modena - Italy

phone: +39 0536 803.503  
fax: +39 0536 185.2040

[www.inkiostrobianco.com](http://www.inkiostrobianco.com)  
[info@inkiostrobianco.com](mailto:info@inkiostrobianco.com)  
[press@inkiostrobianco.com](mailto:press@inkiostrobianco.com)





